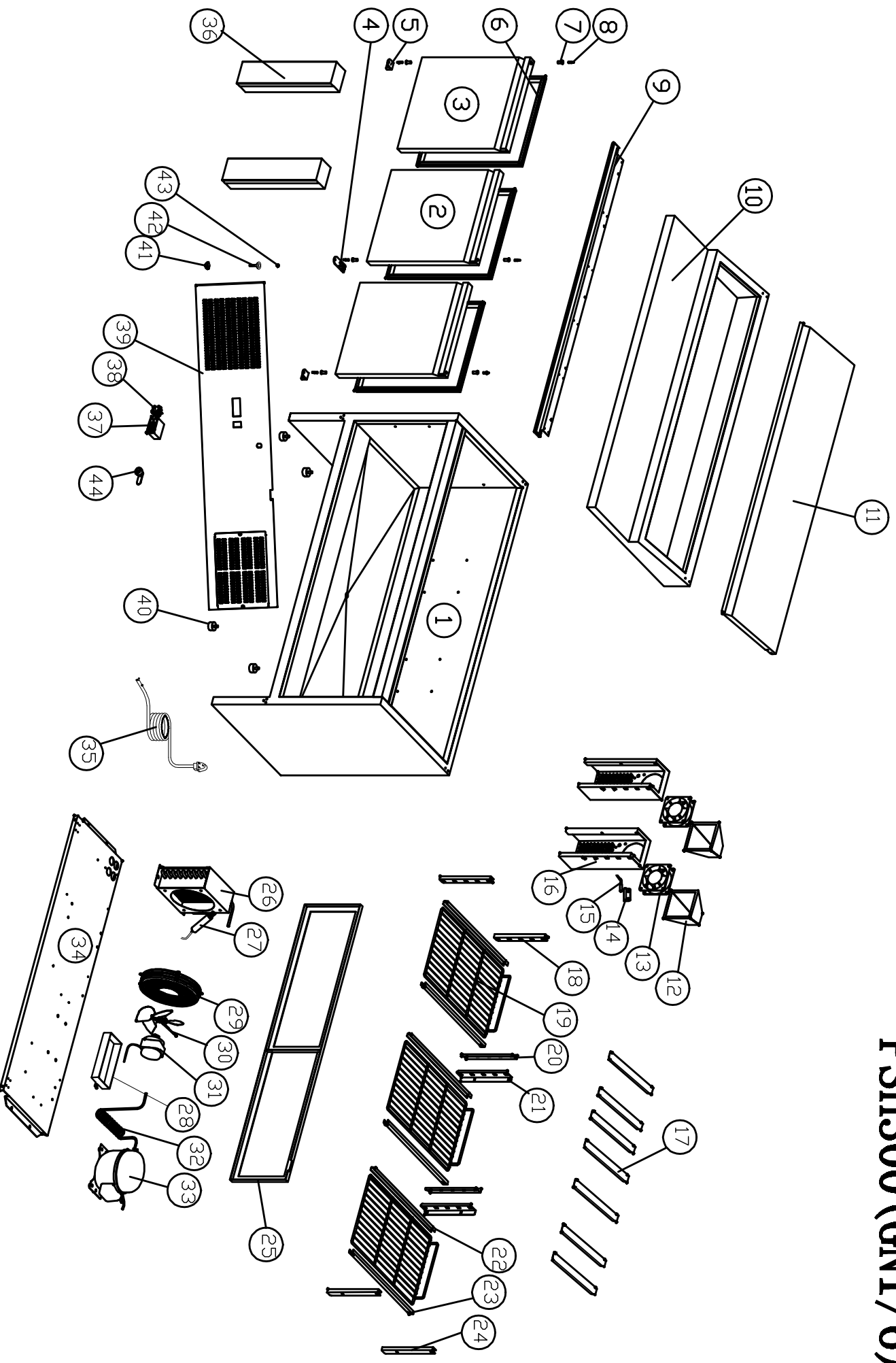


PSH300 (GN1/6)



PSH300 (GN1/6) SPARE PARTS LIST

| | CODE | CODE L2G | Name | Désignation | DESCRIPTION | UNIT | QTY | REMARK |
|----|------------------|------------|---------------------|-------------------------------------|-------------|------|-----|--------|
| 1 | SKC-0-000-0251-0 | #N/A | BODY | CORPS | | SET | 1 | |
| 2 | SKC-0-000-0177-0 | S900.07 | DOOR/RIGHT | PORTE DROITE | | SET | 2 | |
| 3 | SKC-0-000-0176-0 | S900.54 | DOOR/LEFT | PORTE GAUCHE | | SET | 1 | |
| 4 | SKC-2-001-0149-0 | #N/A | MIDDLE HINGE BOARD | CHARNIERE BASSE PORTE CENTRALE | 304# | PC | 1 | |
| 5 | SKC-2-001-0147-0 | #N/A | UP HINGE/RIGHT | CHARNIERE HAUTE DROITE | 201# | PC | 2 | |
| 6 | SKC-2-110-0054-0 | S901.08 | GASKET | JOINT DE PORTE | PVC | PC | 3 | |
| 7 | SKC-2-110-0354-0 | BBT350L.30 | BUSHING | INSERT | | PC | 6 | |
| 8 | SKC-2-170-0211-0 | BBT350L.31 | HINGE AXIS | AXE DE CHARNIERE | 304# | PC | 6 | |
| 9 | SKC-2-001-0148-0 | #N/A | up hinge board | CORNIERE DE CHARNIERE HAUTE | 201# | PC | 1 | |
| 10 | SKC-0-000-1096-0 | #N/A | cutting board | PLAQUE DE DECOUPE | | PC | 1 | |
| 11 | SKC-2-005-0016-0 | #N/A | top cover | COUVERCLE TELESCOPIQUE | 201# | PC | 1 | |
| 12 | SKC-2-110-0040-0 | #N/A | AIR FLOW CONDUCT | CONDUIT D'AIR | ABS | PC | 2 | |
| 13 | SKC-4-001-0026-0 | BBT350L.47 | EVAPORATOR FAN | VENTILATEUR D'EVAPORATEUR | 4C-230HB | PC | 2 | |
| 14 | SKC-2-002-0036-0 | BBT350L.50 | SENSOR FIXED CLIP | CLIP DE FIXATION DE SONDE | | PC | 1 | |
| 15 | SKC-4-030-0005-0 | #N/A | PROBE | SONDE | DIXELL | PC | 1 | |
| 16 | SKC-2-004-1014-0 | #N/A | fan seat | | 201# | PC | 2 | |
| 17 | SKC-2-004-0439-0 | #N/A | PAN SUPPORT | SEPARATEUR | 201# | PC | 7 | |
| 18 | SKC-2-001-0059-0 | #N/A | FRONT SUPPORT/RIGHT | MONTANT AVANT DROIT VERTICAL | 201# | PC | 2 | |
| 19 | SKC-2-120-0013-0 | S900.11.1 | SHELF | ETAGERE | | PC | 3 | |
| 20 | SKC-2-001-0058-0 | #N/A | FRONT SUPPORT/LEFT | MONTANT AVANT GAUCHE VERTICAL | 201# | PC | 2 | |
| 21 | SKC-2-001-0061-0 | #N/A | BACK SUPPORT/RIGHT | MONTANT ARRIERE DROIT VERTICAL | 201# | PC | 2 | |
| 22 | SKC-2-001-0096-0 | #N/A | SET GUIDE/LEFT | PAIRE DE GLISSIERES | 201# | PC | 3 | |
| 23 | SKC-2-001-0097-0 | #N/A | SET GUIDE/RIGHT | PAIRE DE GLISSIERES | 201# | PC | 3 | |
| 24 | SKC-2-001-0060-0 | #N/A | BACK SUPPORT/LEFT | MONTANT ARRIERE GAUCHE VERTICAL | 201# | PC | 2 | |
| 25 | SKC-2-001-0124-0 | #N/A | MIDDLE SUPPORT | MONTANT MILIEU | | PC | 1 | |
| 26 | SKC-2-102-0012-0 | PS900.35 | CONDENSOR | CONDENSEUR | | PC | 1 | |
| 27 | SKC-2-103-0035-0 | #N/A | FILTER DRIER | DESHYDRATEUR | | PC | 1 | |
| 28 | SKC-2-110-0640-0 | #N/A | OUTER WATER PAN | BAC A EAU | | PC | 1 | |
| 29 | SKC-2-120-0041-0 | #N/A | FAN GRILL | GRILLE DE PROTECTION DU VENTILATEUR | | PC | 1 | |

PSH300 (GN1/6) SPARE PARTS LIST

| | CODE | CODE L2G | Name | Désignation | DESCRIPTION | UNIT | QTY | REMARK |
|----|------------------|-------------|--------------------|-----------------------------|-------------|------|------|--------|
| 30 | SKC-2-105-0003-0 | BBT350L.08 | FAN BLADE | HELICE DU VENTILATEUR | | PC | 1 | |
| 31 | SKC-4-001-0005-0 | #N/A | CONDENSOR FAN | VENTILATEUR DE CONDENSEUR | EBM 5W | PC | 1 | |
| 32 | SKC-2-104-0217-0 | #N/A | High pressure pipe | TUYAU DE HAUTE PRESSION | | PC | 1 | |
| 33 | SKC-4-040-0087-0 | HPKD190A | COMPRESSOR | COMPRESSEUR | EMBRACO | PC | 1 | |
| 34 | SKC-2-001-0489-0 | #N/A | UNIT BOARD | SUPPORT GROUPE | | PC | 1PCS | |
| 35 | SKC-4-010-0111-0 | #N/A | PLUG | CABLE ELECTRIQUE | EU | PC | 1 | |
| 36 | SKC-0-000-0175-0 | #N/A | MULLION | MONTANT VERTICAL | | SET | 2 | |
| 37 | SKC-4-030-0017-0 | XR02CX | THERMOSTAT | THERMOSTAT | DIXELL | PC | 1 | |
| 38 | SKC-4-050-0001-0 | GE800BT-6 | MAIN SWITCH | BOUTON M/A | | PC | 1 | |
| 39 | SKC-2-004-0189-0 | #N/A | FRONT PANEL | PANNEAU AVANT | 201# | PC | 1 | |
| 40 | SKC-2-140-0008-0 | #N/A | FEET | PIEDS DE REGLAGE | | PC | 4 | |
| 41 | SKC-2-110-0317-0 | GN1200TN.39 | drain pipe nut | ECROU DE TUYAU DE VIDANGE | ABS | PC | 1 | |
| 42 | SKC-2-110-0316-0 | GN1200TN.38 | drain pipe | TUYAU DE VIDANGE | ABS | PC | 1 | |
| 43 | SKC-2-110-0318-0 | GN1200TN.37 | drain pipe block | BOUCHON DE TUYAU DE VIDANGE | ABS | PC | 1 | |
| 44 | SKC-2-170-0081-0 | GN1200TN.07 | lock | SERRURE | | PC | 1 | |